



The CLRAH in Images

Volume 1, Nº 3

Activities Programmed for November & December

Key Features

- EXPOLOGISTICS
- CLRAH 's Maiden Drill
- Building Strategic Alliances

Contents:

LCA and TI	2
CLRAH's Maiden Drill	3
Our Users	4
IFRC and UNHRD	5
EXPOLOGISTICS	6
Our Users at Expologistics	7
Forums, Workshops and Educational Activities	8
CTC in Action	9

The CLRAH at "Expologistics" 2019

For two consecutive years, the Regional Logistics Center for Humanitarian Assistance (CLRAH) participates afore the XIII meeting of the **Expo Logistics Panama**, organized by the Chamber of Commerce, Industry and Agriculture of Panama, as well as by the National Secretariat of Science, Technology and Innovation (SENACYT), furthermore inaugurated by Vice President and Minister of the Presidency of the Republic of Panama, H.E. Jose Gabriel Carrizo.

Expo-Logistics is a showcase destined to expose new technology, exchange of knowledge, best practices, and the kind, whereby this year Brazil was had as Guest Invitee .



During this event, the CLRAH bore an exhibition stand which was inaugurated by the Minister of Government, H.E. Carlos Romero, accompanied by Directors Carlos Rumba and Alberto Sierra of the SINAPROC and the CLRAH, respectively, along with Secretary General of the Ministry of Government, Joaquin Vasquez, Mauricio Bustamante for FIRC, Francisco Quezada in representation of the UNHRD and Miguel Barreto for PMA.

10 December 2019

Panama Places CLRAH at Disposition of the SICA

The Vice President of the Republic of Panama, H.E. Jose Gabriel Carrizo Jaen, at meeting held in the City of San Salvador by member countries to the Central American Integration System (SICA), highlighted the compromise assumed by Panama, not only to promote the institutional reinforcement of the SICA, but also for being prepared to consolidate the Central American policy on Integral Risk Management.

In this sense, he reinstated that *"Panama, places at disposition its Regional Logistics Center for Humanitarian Assistance or CLRAH, which counts on a Knowledge Transfer Center, to form and train on topics related to the humanitarian agenda, in addition to risk management, & response, before disasters that ravage the region"*.



The vice-presidents of SICA aim to synchronize solutions and to implement public policies that protect the most vulnerable populations in the Central American Region.

2 December 2019

Jose Gabriel Carrizo (Right), at the SICA Meeting

PANAMA'S LOGISTICS CAPACITY ASSESSMENT (LCA)

The Logistics Capacity Assessment (LCA), is a tool that contains baseline information of the logistics capacity of a country. Panama's Logistics Capacity Assessment renders important information about the infrastructure and logistics services it bears concerning humanitarian emergency preparedness and response. These reports are gathered and hence published on platform by Global Logistics Cluster (<https://dlca.logcluster.org>), for disposition of the global humanitarian community.

In America, 15 countries rely on LCAs, amongst which are found Costa Rica, Colombia, the Dominican Republic, Chile, Peru, Guatemala, Nicaragua, Honduras, Belize, El Salvador, etc. The LCA is composed by three main sections, such being: Country Profile, Logistics Infrastructure and Services. The report gives way to outline the country's logistic capacity and its possible limitations.

BENEFITS FOR THE COUNTRY

Eventhough Panama is considered a country with little exposure to extreme disasters, it is important to emphasize that it's infrastructure and it's services, then as a Logistics Hub, today as Humanitarian one, is of great value to the international community for strategy formulations, as well as for the execution of national and regional operations should emergency strike. The LCA Project would give way to the following:

- ◇ Develop the First Evaluation of Panama's Logistics Capacity in the Context of Humanitarian Assistance;
- ◇ Contribute directly to the preparedness of Panama before emergency situations by relying on updated information to streamline the formulation of strategies and coordination of humanitarian logistics, carried out by authorities linked to disaster response;
- ◇ Make readily available updated information for the global humanitarian community concerning Panama's Logistics Capacity as a Humanitarian Hub.
- ◇ Promote synergy between the Panamanian State, the global humanitarian community and the country's private sector, geared towards enhancing humanitarian logistics preparedness, response and coordination, amid disasters.

PROGRESS

- ◇ The aforementioned Project with its General Traits has been formally exposed before different government authorities, as follows: MOP, MIDA, MINSA, MINSEG, AAC, ANA, TOCUMEN, S.A., ATTT, among others.
- ◇ The different types of information requests was explained i.e. interview formats and EXCEL Templates. Furthermore, individual meetings will be held with Key Players, in order to validate the information provided.

***"Strengthening
Panama's Logistics
Capacities"***

Cargo Internal Transfer Process

CLARH, jointly with the National Customs Authority, and the Panama Pacific Agency, is currently drafting a proposal for Customs to establish the "Internal Cargo Transfer" for Humanitarian Assistance. The Internal Cargo Transfer already exists, nonetheless, it focuses on commercial logistics and not on the humanitarian one.

Currently, international users such as FICR & UNHRD, are undertaking the necessary steps to enter/exit the humanitarian assistance by means of a simplified legal decree from Customs; for current processes and paperwork to record cargo movements into the system takes over two weeks.

Nonetheless, with the Internal Cargo Transfer for Humanitarian Assistance, said process could be slashed down to a (1) mere day, starting from the day cargo movement input is recorded into the system till it reaches its aerial port of destination. This would allow one to count on real time data concerning humanitarian cargo movements, and likewise, would significantly reduce man hours spent on non value-added activities, such as paperwork and processing.

In alignment with the needs identified for this new process, Customs and CLRAH have drafted a proposal for a Cabinet Decree, whereby provisions have been added for the humanitarian cargo, in order to perceive Panama not merely as a Logistics Hub only, but rather as a Humanitarian one as well.

The Internal Cargo Transfer for Humanitarian Assistance, jointly with the aforementioned Decree, will allow the country to fortify itself by simplifying and streamlining administrative procedures for emergency response in the national, regional and international level.



PROCESS MEETING AGENDA

- * Budget Committee Meeting re Facility Management (FICR) and CLARH-FICR Communications.

06 November 2019

Preparatory meeting for CLRAH's Simulation ahead of CEPREDENAC's Maiden Drill with users and strategic partners.

07,12,14,15, 19,20 & 21 November 2019

- * LCA Project & Work Plan introduction to the Logistics Sectorial Board.

08 November 2019

- * Videoconference to be held with Customs for the presentation and coordination of the IHC Project, involving the logistics databank.

19 November 2019

- * Proposal of the LCA Project to the Civil Aviation Authority.

20 November 2019

- * Meeting with Panama Chamber of Commerce as to structure the very first "Humanitarian Business Conference" to be exposed at the upcoming Expocomer International Trade Exhibition 2020.

22 November 2019

- * Project kickoff Meetings to introduce the LCA Project to government authorities, such as: AMP, MIDA, MOP, ATT, SENAM, SENAFRONT, and the kind.

2, 3, 18, 23 December 2019

- * Strategic Meeting with Tocumen International Airport's Management Committee concerning Access to Panama Pacifico International Airport.

5 December 2019

CLRAH's Maiden Drill

Nine (9) Institutions, as well as 20 participants engaged in this exercise that allowed to put in practice the interactions had between users, government partners and CLRAH, specifically on logistics facilitation, that paved way to strengthening the link held between users and the CLRAH, and likewise, the role of government partners in streamlining humanitarian response should disaster strike.

The government officials identified the difficulties encountered at the moment of providing a specific response before a real world disaster relief event. As such, they are able to hone their expeditionary and readiness capabilities in the event of a contingency.

Based on results of this Maiden Drill, CLRAH has contemplated to develop a Logistics Facilitation Manual to include an inventory of the humanitarian actions processed by government authorities, with the purpose of streamlining requests for information.

Proving furthermore, the importance of establishing a link between the Panama Humanitarian Assistance Coordination Center (CAHA, for its acronym in Spanish) with the CLRAH; and likewise, to establish CLARH's operations as a part of MecReg SICA, and prepare to place in force the use of DUCA, for international organizations at a regional level, amongst others.

PARTICIPANTS

1	Civil Aviation Authority (AAC)	6	Ministry of Foreign Relations
2	Panama Customs Authority	7	Ministry of Agricultural Development
3	Regional Logistics Center for Humanitarian Assistance	8	World Food Programme (WFP)
4	United Nations Humanitarian Response Depot (UNHRD)	9	National Civil Protection System (SINAPROC)
5	International Federation of the Red Cross and Red Crescent Societies (IFRC)		



25 November 2019

Meeting with the Newly Commissioned Director of SINAPROC



The CLRAH was visited by Carlos Rumbo, the newly commissioned Director of the National Civil Protection System or SINAPROC, for its acronym in Spanish, accompanied by his personal assistant.

CLRAH Director, Alberto Sierra, and SINAPROC's newly commissioned Director, Carlos Rumbo, reaffirmed the warm relations of joint collaboration between both entities, predicting great progress in their joint management. Furthermore, Rumbo mentioned being aware of the pivotal role the CLRAH bears on matters concerning humanitarian assistance and logistics, and SINAPROC's involvement in it.

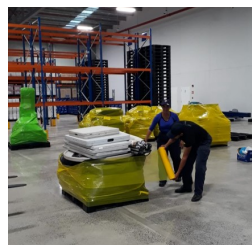
20 November 2019

National User: SINAPROC

Through the humanitarian warehouse of SINAPROC, a national user of CLRAH, humanitarian logistics operations were dispatched onto 67 families residing at the West Panama region, and likewise, onto some 71 more families residing at the East Panama región, due to floods encountered during the month of November 2019.

Likewise, USAR-Panama Group was prepped to participate at the Regional Simulation, organized by CEPREDENAC to take place from 25-29 November 2019.

“Our Users”



November & December 2019

Data Protection by the IFRC

In Geneva, delegates to the International Federation of Red Cross & Red Crescent Societies, moreover responsible for the entire World, took a step ahead upon accepting to reinforce the protection of data gathered to reunite families that have been separated either due to conflicts, or due to natural disasters.

Just like other humanitarian organizations, the CICR strives for the creation of a “digital humanitarian site,” whereby personal data bear the exact same level of international protection, which sanitary facilities and ambulances bear.

In place of directly deploying provisions onto the displaced or survivors of disasters, the NGOs opt instead for electronic money transfers, specially with cellular phones, to aid people in need, and by doing so, support their national commerce. Extract taken from La Prensa Newspaper, 16 December 2019.

15 December 2019

Our International Users

International Federation of Red Cross and Red Crescent Societies

During the months of November and December 2019, we undertook the task of product repositioning at our depots for having received a sorted array of articles i.e. cleaning kits, kitchen kits, tents, mosquito mesh, and so forth. These articles are to be employed in future emergency operations of the región.



Aid has been destined to "Operation Migration in the Darien Province, Panama", through purchase and dispatch of certain goods i.e. construction material, water & sanitation, as well as medical supplies. Likewise, non-consumable goods were also dispatched to the Bahamas and Cuba, whereas medicines in the case of Venezuela.

From Panama, the procurement team worked avidly to provide remote control purchases to different operations in the region, such as Colombia, Venezuela, the Bahamas, Ecuador and Chile.



United Nations Humanitarian Response Depot-UNHRD



For over a decade, UNHRD Panama branch has promoted humanitarian assistance. Nonetheless, their wise decision to reposition themselves at the CLRAH, has granted them leeway to fortify their operations due to larger warehouse capacity and greater efficiency.

During the months of September to December 2019, a total of 24 Humanitarian operations took

place, involving 8 partners and 9 countries, in distress, to mention a few.



The Bahamas Operation: From UNHRD Panama, eight Mobile Storage Units (MSU), as well as six Prefabricated Offices were delivered, in collaboration with the PMA, and other humanitarian actors, such as: Red Cross of the Bahamas, NGO Samaritan's Purse, and Team Rubicon; the field staff installed a logistics center at Marsh Harbour managed by the PMA that rendered vital operations of the supply chain process onto the government of the Bahamas and the Humanitarian Community.



EXPOLOGISTICS 2019

During said event, CLRAH's presence was well perceived not only due to the conference exposed by its Executive Director, Mr. Alberto Sierra, but more so due to the participation of international users such as, Mr. Francisco Quesada on behalf of the UNHRD, and Ms. Stephany Murillo, in representation of the International Federation of the Red Cross & Red Crescent Societies; whereby a Custom Exhibition Stand was had, divulging an organised presentation of all the facilities the CLRAH offers; furthermore inaugurated, by the Minister of Government, H.E. Carlos Romero.



*“International
Logistics
Showcase”*

CHINA LAC



The Executive Director of the CLRAH, Mr. Alberto Sierra and his staff, participated before the entrepreneurs meeting had between China, Latin America and the Caribbean, celebrated in Panama City from 9 to 11 December, termed China LAC. Said Summit was organized by the following entities: The Chinese Council for the Promotion of International Commerce, the Inter-American Development Bank, the Ministry of Commerce & Industry of Panama, the Tourism Authority of Panama, and the Chamber of Commerce, Industry and Agriculture of Panama. The ribbon cutting ceremony was accomplished by His Excellency, Laurentino Cortizo Cohen, President of the Republic of Panama.

Participation of the Director of the CLRAH in Expologistics

With the topic titled: *Logistics Advantage of a Humanitarian Hub in Panama*, the Executive Director of the aforementioned Regional Logistics Center for Humanitarian Assistance, Alberto Sierra, presented during the “Update for the Logistics Sector”: *Expectations, Trends, Challenges and Opportunities*; carried out as part of the activities of the Expo Logistics Panama 2019.

The participation of Sierra was significant, for during his administration the operation of the CLRAH has been executed through its respective Users.

11 November 2019



Users Participate at Expologistics



During this year, CLRAH's participation was quite meaningful, since for the very first time, the international users were given the privilege to act as lecturers before such important an international gathering.

Furthermore, presence of the UNHRD was also perceived through its Director, Mr. Francisco Quesada, who offered a thorough rendition of the services offered i.e. the recent placement of a Single Window (an entry point for all information), the Logistics Facilities and the humanitarian assistance of said organization.

10 and 11 November 2019

Likewise, Ms. Stephany Murillo in representation of the International Federation of the Red Cross & Red Crescent Societies, made her exposition based on the operations that the largest Humanitarian Network Worldwide provides; having supported over 150 million individuals and 190 national corporations, through the work of over 13 million volunteers.

The Regional Logistics Center supports disaster response operations in Latin America and the Caribbean.



Forums, Workshops and Educational Activities

The fórum about the Climate of Central America is a technical-scientific work-group which is coordinated by the Regional Committee of Hydraulic Resources of the Central American Integration System, which counts on experts in the fields of Meteorology, Climatology and Hydrology of the Meteorological and Hidrological Services of the region. The cited event bore the presence of Mr. Alberto Sierra, Executive Director of the CLRAH accompanied by his work staff, which was very important due to the job the Center achieves through its users.



20 November 2019

Workshop on Space Applications for Central America & the Caribbean

The CLRAH participated at the multi-country workshop on Space Applications for Central America & the Caribbean, with the purpose of sharing usage of the GALILEO and COPERNICUS systems, to improve environmental management, understand and mitigate the effects of climate change, and ensure citizen security. This is an initiative of the Ministry of Foreign Affairs in coordination with the delegation of the European Union for Panama and Nicaragua.



26 & 27 November 2019

**“Education &
Constant**

**Preparation of
the CLRAH”**

Project Management Workshop_PMI

The Executive Director of the CLRAH, Mr. Alberto Sierra participated in the Workshop termed “Introduction to Project Management according to the PMI (PMI, Project Management Institute) Standard, organized by UNOPS on 26 & 27 November 2019.

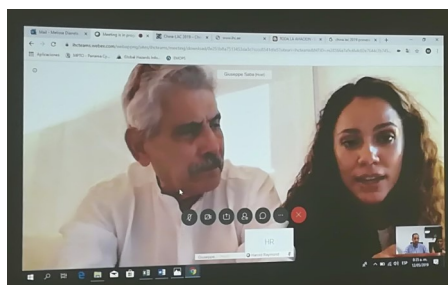
During this Workshop concepts about project management, scopes, schedules, development and project risks were analyzed, among others.



Video Conference with the Humanitarian City of DUBAI

On December 05, 2019, the Executive Director of CLRAH, Mr. Alberto Sierra and his work team participated in a videoconference with the Director of the International Humanitarian City of Dubai, Mr. Giuseppe Saba with the purpose of strengthening cooperation and synergy ties, sustained by the largest hub, worldwide.

During the meeting invitations by both parties were exchanged in order to promote and develop a more continuous and permanent strategic political approach.



CTC IN ACTION: Educational Tours of Universities and Visits

A group of Engineering students from the University of Panama paid a visit to the CLRAH, reaffirming the educational Alliance with the Academy, in order to strengthen cooperation ties between both institutions

During the cited visit, Rafael Bonilla, Coordinator of CTC presented the background, objectives and operations of the CLRAH, in addition to the presentation of an instructional operations video of each of the users; wrapping up the visit with an on-site visit to each of the warehouses of the respective users.



22 November 2019

INADHE Students visit the CLRAH

Students of the Transportation Operations Course of the National Institution for Vocational Formation & Training for the Human Development (INADHE, for its initials in spanish), upon visiting the CLRAH were gladly welcomed by Rafael Bonilla, CTC Coordinator, and Osvaldo Guerrero, Administrative Assistant of CLRAH,

During said visit, it was posible to share with the students, the pivotal role the humanitarian logistics hub plays in the academic chores of these students, aside to their keen interest in physically getting to know the premises and facilities, not only on the educational level, but on the operative one, as well.



22 November 2019

JTF Bravo pays a visit to the CLRAH

On December 04, 2019, we were visited by JTF Bravo service members, for an emergency response and humanitarian assistance exercise termed "Mercury".

At said visit, the objectives, scope and operations carried out by the CLRAH through their respective Users, were shared. Moreover, a tour to each and every single Warehouse that forms the complex was also achieved; receiving firsthand information from the International Federation of Red Cross and Red Crescent Societies, and likewise from the National Civil Protection Service or SINAPROC.



4 December 2019

CRC Germany visits the CLRAH

Furthermore, on December 05, 2019, we were visited by representatives of the Crisis Response Center of the Federal Government of Germany, with the purpose of sharing not only the facilities CLRAH offers, but also its objectives, operations and benefits, in order to quickly be able to respond to any to real-world disaster relief event, and likewise, to be able to evacuate German citizens, if necessary in Panama, and strengthen cooperation ties between both countries.



Connecting the World, Serving the Region

The Regional Logistic Center for Humanitarian Assistance (CLRAH, for its initials in the English language), assigned to the Ministry of Government, is created by Law 80 of December 14, 2017, as a Logistic Platform for Humanitarian Assistance, whose end purpose is to facilitate the activities of reception, handling, storage and redistribution of supplies and equipment, as well as deployment of human resources before national and international emergencies that take place in the region; guaranteeing as such an efficient humanitarian assistance and logistics, and hence consolidating as such the Humanitarian Hub of Panama.

Moreover, the National Civil Protection System, the International Federation of the National Red Cross and Red Crescent Societies, as well as the United Nations Humanitarian Response Deposit, form part of the CLRAH.



Preparing & Working for Humanitarian Activities

Regional Logistic Center for Humanitarian Assistance

Boulevard De Las Americas
Panama-Pacifico, Corregimiento
of Veracruz
Panama West

Telephone:
(507) 520-4622/ 27

Email: clrah@mingob.gob.pa

www.mingob.gob.pa/hub-humanitario/

